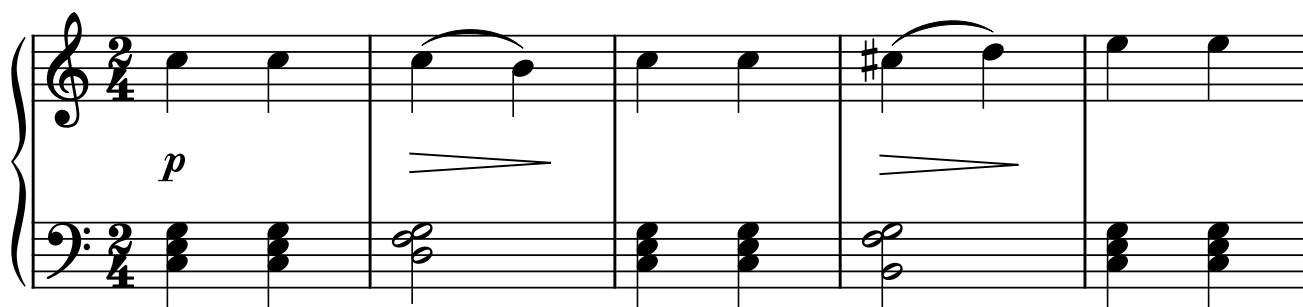


Allegretto in C

Anton Diabelli
Variations by James

♩ = 112



21

Measures 21-25 of the piece. The music is in G major (one sharp) and 3/4 time. The right hand features a melodic line with a slur over measures 23-24, and a dynamic marking of *mp* (mezzo-piano) at measure 24. The left hand provides a steady eighth-note accompaniment.

26

Measures 26-30 of the piece. The right hand continues the melodic line with a slur over measures 28-29. The left hand maintains the eighth-note accompaniment.

31

Measures 31-35 of the piece. The right hand features a melodic line with a slur over measures 33-34, and a dynamic marking of *mf* (mezzo-forte) at measure 35. The left hand provides a steady eighth-note accompaniment.

36

Measures 36-40 of the piece. The right hand features a melodic line with a slur over measures 38-39, and a dynamic marking of *f* (forte) at measure 40. The left hand provides a steady eighth-note accompaniment.

41

tr

46

f *mf*

51

f 8

55

tr 8

59

8

mf

The image shows a musical score for a piano piece, specifically measures 59 through 62. The score is written for a grand piano, with a treble and bass staff. Measure 59 is marked with a '59' and a '8' above it, indicating an eighth-note pattern. The treble staff contains a series of eighth notes, while the bass staff has a single eighth note. Measure 60 is marked with a '60' and a '4' above it, indicating a quarter-note pattern. The treble staff contains a series of quarter notes, while the bass staff has a single quarter note. Measure 61 is marked with a '61' and a '4' above it, indicating a quarter-note pattern. The treble staff contains a series of quarter notes, while the bass staff has a single quarter note. Measure 62 is marked with a '62' and a '4' above it, indicating a quarter-note pattern. The treble staff contains a series of quarter notes, while the bass staff has a single quarter note. The dynamic marking *mf* (mezzo-forte) is placed below the treble staff in measure 60. The score ends with a double bar line in measure 62.